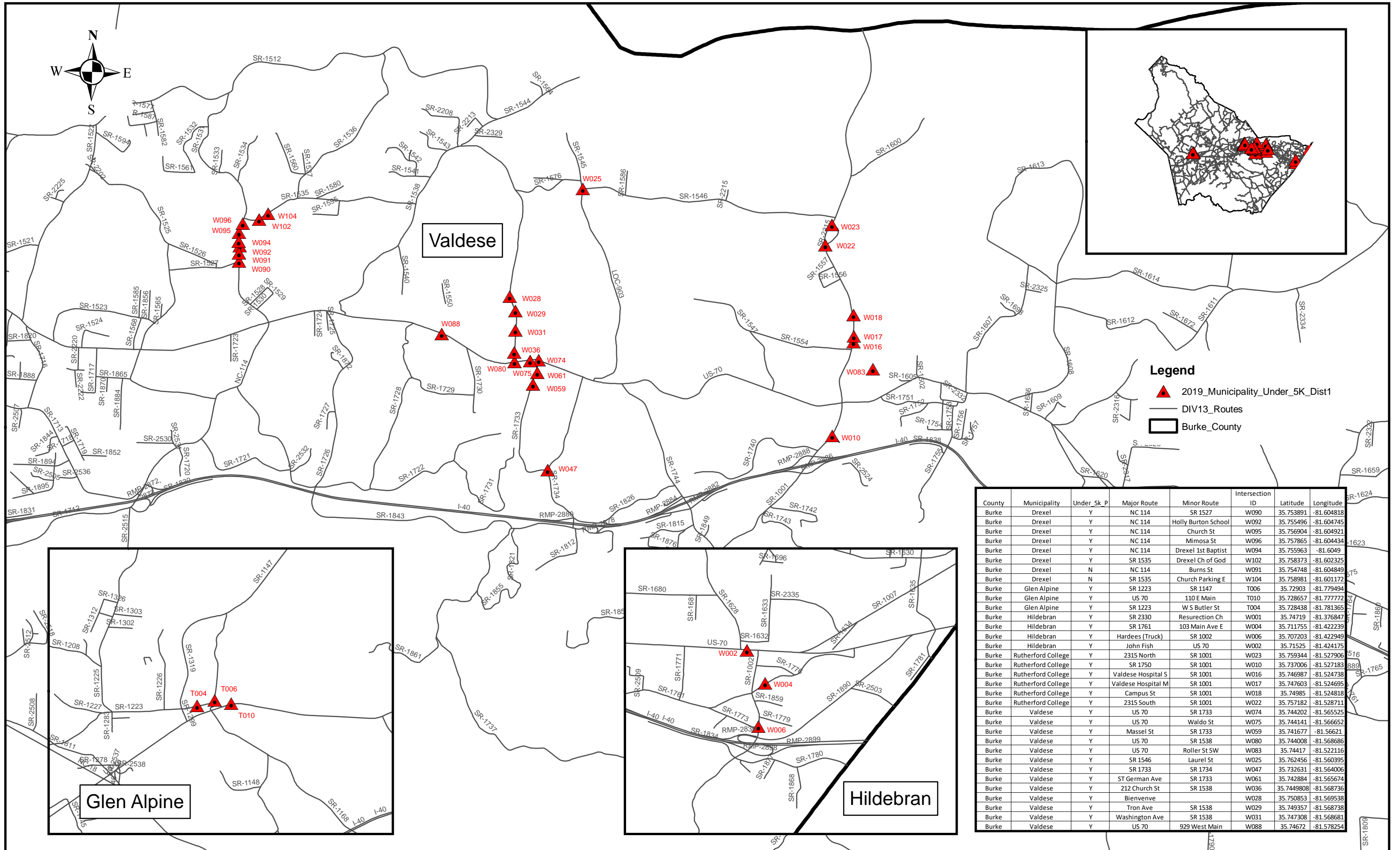


DM00290, R-5793HA, Burke

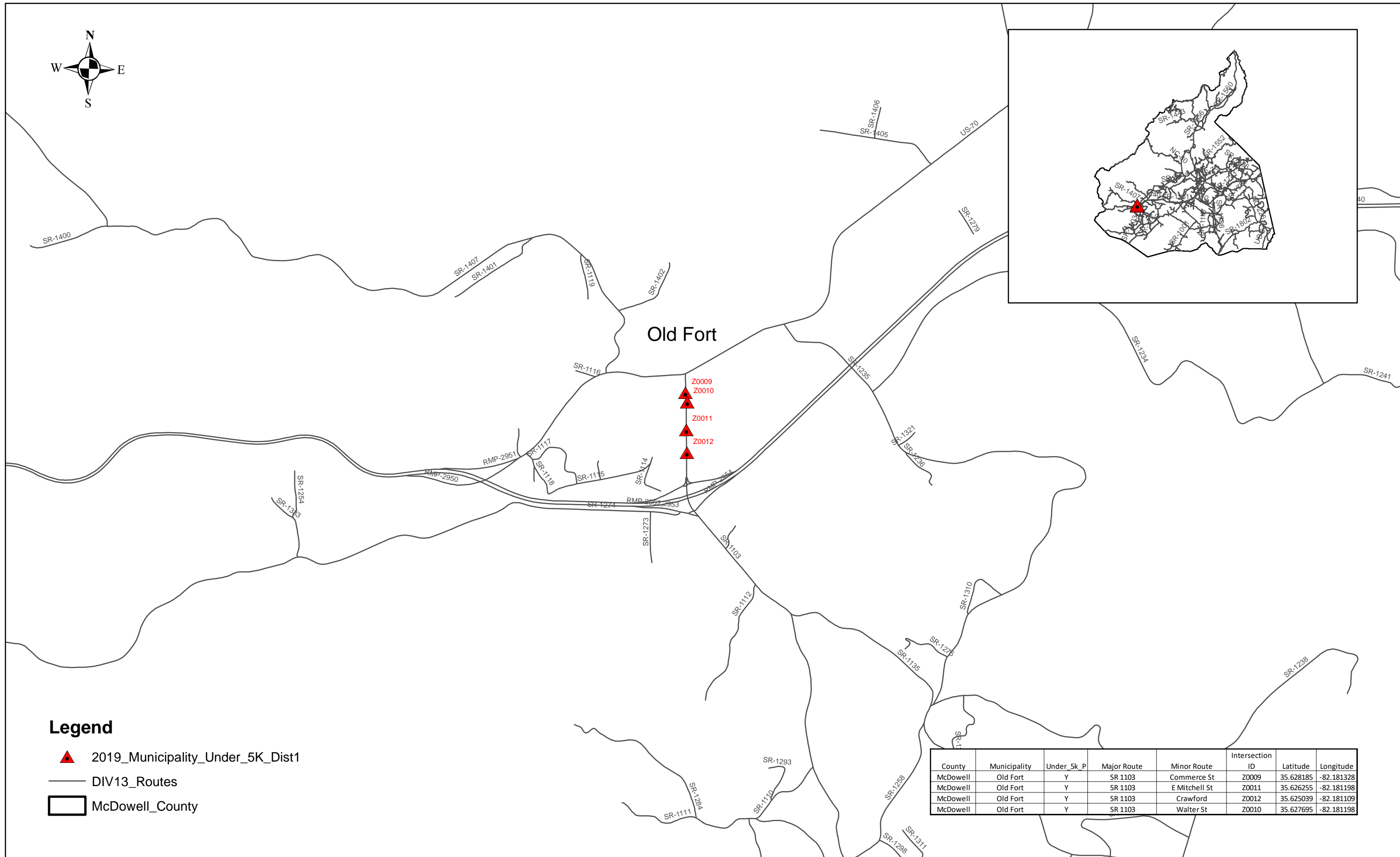


DM00290, R-5793HA, Burke

WBS #: 44923.3.16

Division	County	Municipality	Under 5k Population? (Y/N)	Minor Route	Major Route	Intersection ID	Latitude	Longitude	Asphalt Plant Mix, Pavement Repair (TONS)	2'-6" Concrete C&G (LF)	4" Concrete Sidewalk (SY)	Concrete Curb Ramp (EA)	6" Concrete Driveway (SY)	Notes
13	Burke	Drexel	Y	NC 114	SR 1527	W090	35.753891	-81.604818	1	10	10	2		NEW AND 2017
13	Burke	Drexel	Y	NC 114	Holly Burton School	W092	35.755496	-81.604745	1	20	25	2		NEW AND 2017
13	Burke	Drexel	Y	NC 114	Church St	W095	35.756904	-81.604921		15	30	4		
13	Burke	Drexel	Y	NC 114	Mimosa St	W096	35.757865	-81.604434	1	10	20	3		
13	Burke	Drexel	Y	NC 114	Drexel 1st Baptist	W094	35.755963	-81.604900	1	10	25	3		
13	Burke	Glen Alpine	Y	SR 1223	SR 1147	T006	35.729030	-81.779494	1			2		flush no ramps needed
13	Burke	Glen Alpine	Y	US 70	110 E Main	T010	35.728657	-81.777772	1			2		flush no ramps needed
13	Burke	Glen Alpine	Y	SR 1223	W S Butler St	T004	35.728438	-81.781365				2		flush no ramps needed
13	Burke	Hildebran	Y	SR 2330	Resurrection Ch	W001	35.747190	-81.376847	1	10	15	2		
13	Burke	Hildebran	Y	SR 1761	103 Main Ave E	W004	35.711755	-81.422239	1			2		
13	Burke	Hildebran	Y	Hardees (Truck)	SR 1002	W006	35.707203	-81.422949	1	30	30	2		
13	Burke	Hildebran	Y	John Fish	US 70	W002	35.715250	-81.424175	1	10	30	2		
13	Burke	Rutherford College	Y	SR 1750	SR 1001	W010	35.737006	-81.527183		40	25	2		delete 2
13	Burke	Rutherford College	Y	Valdese Hospital S	SR 1001	W016	35.746987	-81.524738			18	2		
13	Burke	Rutherford College	Y	Valdese Hospital M	SR 1001	W017	35.747603	-81.524695	1	20	25	3		
13	Burke	Rutherford College	Y	Campus St	SR 1001	W018	35.749850	-81.524818	2	5	10	2		
13	Burke	Rutherford College	Y	2315 South	SR 1001	W022	35.757182	-81.528711	1		18	2		
13	Burke	Valdese	Y	US 70	SR 1733	W074	35.744202	-81.565525	1	15	20	4		
13	Burke	Valdese	Y	US 70	Waldo St	W075	35.744141	-81.566652	1	10	15	2		
13	Burke	Valdese	Y	Massel St	SR 1733	W059	35.741677	-81.566210	1	15	30	2		
13	Burke	Valdese	Y	US 70	SR 1538	W080	35.744008	-81.568686	1	10	15	3		
13	Burke	Valdese	Y	US 70	Roller St SW	W083	35.744170	-81.522116	1	15	20	2		
13	Burke	Valdese	Y	SR 1546	Laurel St	W025	35.762456	-81.560395	1	10	15	1		
13	Burke	Valdese	Y	SR 1733	SR 1734	W047	35.732631	-81.564006	1	10	15	1		
13	Burke	Valdese	Y	ST German Ave	SR 1733	W061	35.742884	-81.565674	1	15	15	3		
13	Burke	Valdese	Y	212 Church St	SR 1538	W036	35.744981	-81.568736	1	25	20	4		
13	Burke	Valdese	Y	Bienvenve		W028	35.750853	-81.569538	1	20	10	2		
13	Burke	Valdese	Y	Tron Ave	SR 1538	W029	35.749357	-81.568738				2		
13	Burke	Valdese	Y	Washington Ave	SR 1538	W031	35.747308	-81.568681				2		
13	Burke	Valdese	Y	US 70	929 West Main	W088	35.746720	-81.578254	1	5	10	2		
13	Burke	Drexel	Y	SR 1535	Drexel Ch of God	W102	35.758373	-81.602325				4		
13	Burke	Drexel	Y	NC 114	Burns St	W091	35.754748	-81.604849	1	15	10	3		
13	Burke	Drexel	Y	SR 1535	Church Parking E	W104	35.758981	-81.601172	1	25	15	4	40	
TOTALS									27	370	491	80	40	

DM00290, R-5793HA, McDowell



DM00290, R-5793HA, McDowell

WBS #: 44923.3.16

Division	County	Municipality	Under 5k Population? (Y/N)	Minor Route	Major Route	Intersection ID	Latitude	Longitude	Asphalt Plant Mix, Pavement Repair (TONS)	2'-6" Concrete C&G (LF)	4" Concrete Sidewalk (SY)	Concrete Curb Ramp (EA)	6" Concrete Driveway (SY)	Notes
13	McDowell	Old Fort	Y	SR 1103	Commerce St	Z0009	35.628182	-82.181409	1	20	25	4		
13	McDowell	Old Fort	Y	SR 1103	E Mitchell St	Z0011	35.626255	-82.181198	1	10	20	6		
13	McDowell	Old Fort	Y	SR 1103	Crawford	Z0012	35.625039	-82.181109	1	10	20	6		
13	McDowell	Old Fort	Y	SR 1103	Walter St	Z0010	35.627695	-82.181198	1	25	20	6		
TOTALS									4	65	85	22	0	

DM00290, R-5793HA, Mitchell



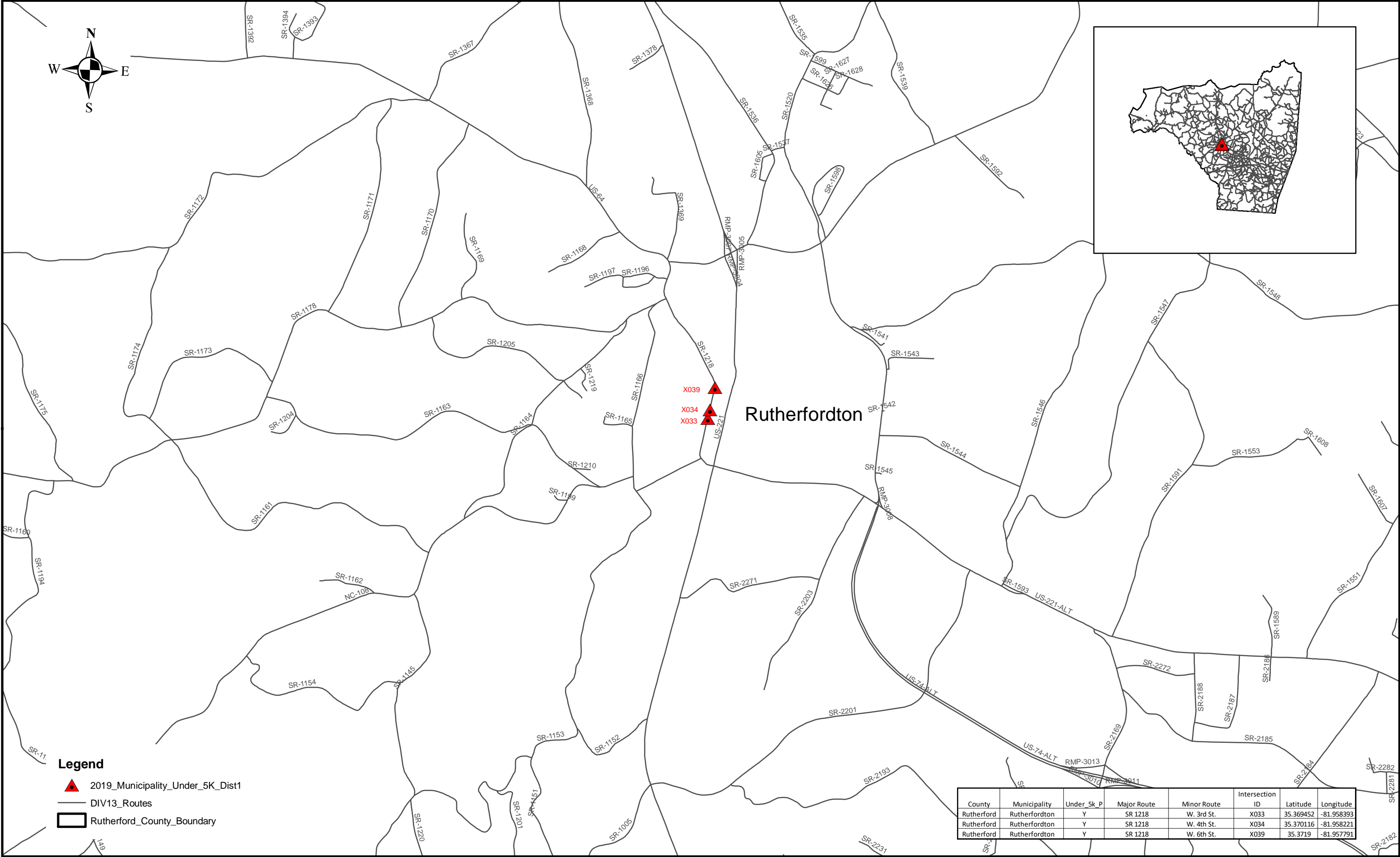
Division	County	Municipality	Under_5k_P	Major Route	Minor Route	Intersction	ID	Latitude	Longitude
13	Mitchell	Bakersville	Y	SR 1260	Willis Cove Rd		Y016	36.011165	-82.156749
13	Mitchell	Bakersville	Y	SR 1260	Bowman School		Y017	36.010925	-82.155817
13	Mitchell	Bakersville	Y	NC 226	Burleson Dr		Y024	36.014464	-82.154196
13	Mitchell	Bakersville	Y	NC 226	SR 1260		Y026	36.010732	-82.153881
13	Mitchell	Spruce Pine	Y	SR 1275	Topaz St		Y032	35.915745	-82.068133
13	Mitchell	Spruce Pine	Y	SR 1275	Crystal St		Y044	35.916344	-82.069273
13	Mitchell	Spruce Pine	Y	SR 1275	Link St		Y047	35.916687	-82.069888
13	Mitchell	Bakersville	Y	SR 1211	United Bank		Y005	36.015908	-82.157389
13	Mitchell	Bakersville	Y	SR 1260	Bakersville/Town Hall		Y009	36.014878	-82.158507

DM00290, R-5793HA, Mitchell




WBS #: 44923.3.16

Division	County	Municipality	Under 5k Population? (Y/N)	Minor Route	Major Route	Intersection ID	Latitude	Longitude	Asphalt Plant Mix, Pavement Repair (TONS)	2'-6" Concrete C&G (LF)	4" Concrete Sidewalk (SY)	Concrete Curb Ramp (EA)	6" Concrete Driveway (SY)	Notes
13	Mitchell	Bakersville	Y	SR 1260	Bowman School	Y017	36.010925	-82.155817	1	15	10	2		
13	Mitchell	Bakersville	Y	NC 226	Burleson Dr	Y024	36.011464	-82.154196	1	25	25	4		
13	Mitchell	Bakersville	Y	NC 226	SR 1260	Y026	36.010732	-82.153881	1	20	20	2		
13	Mitchell	Bakersville	Y	SR 1211	United Bank	Y005	36.015908	-82.157389	2	20	30	4		
13	Mitchell	Bakersville	Y	SR 1260	Willis Cove Rd	Y016	36.011165	-82.156749	1	0	15	1		
13	Mitchell	Bakersville	Y	SR 1260	Bakersville/Town Hall	Y009	36.014878	-82.158507	1	0	10	1		
13	Mitchell	Spruce Pine	Y	SR 1275	Topaz St	Y032	35.915745	-82.068133	1	0	25	2		
13	Mitchell	Spruce Pine	Y	SR 1275	Crystal St	Y044	35.916344	-82.069273	1	0	30	4		
13	Mitchell	Spruce Pine	Y	SR 1275	Link St	Y047	35.916687	-82.069880	1	0	25	3		
TOTALS									10	80	190	23	0	

DM00290, R-5793HA, Rutherford



Legend

-  2019_Municipality_Under_5K_Dist1
-  DIV13_Routes
-  Rutherford_County_Boundary

County	Municipality	Under_5k_P	Major Route	Minor Route	Intersection ID	Latitude	Longitude
Rutherford	Rutherfordton	Y	SR 1218	W. 3rd St.	X033	35.369452	-81.958393
Rutherford	Rutherfordton	Y	SR 1218	W. 4th St.	X034	35.370116	-81.958221
Rutherford	Rutherfordton	Y	SR 1218	W. 6th St.	X039	35.3719	-81.957791

DM00290, R-5793HA, Rutherford

WBS #: 44923.3.16

Division	County	Municipality	Under 5k Population? (Y/N)	Minor Route	Major Route	Intersection ID	Latitude	Longitude	Asphalt Plant Mix, Pavement Repair (TONS)	2'-6" Concrete C&G (LF)	4" Concrete Sidewalk (SY)	Concrete Curb Ramp (EA)	6" Concrete Driveway (SY)	Notes
13	Rutherford	Rutherfordton	Y	SR 1218	W. 3rd St.	X033	35.369452	-81.958393	1			4		washington st - 2018
13	Rutherford	Rutherfordton	Y	SR 1218	W. 4th St.	X034	35.370116	-81.958221				4	15	
13	Rutherford	Rutherfordton	Y	SR 1218	W. 6th St.	X039	35.3719	-81.957791	1		15	4	15	
TOTALS									2	0	15	12	30	